

# Biquad vs. B-shaped Dual-Loop Antennas for 2.4GHz Wi-Fi

## The wireless system

Wireless systems span various applications like navigation, radar, TV, and mobile communications. Antennas play a critical role, especially in WLAN, covering multiple frequency bands. The 2.4GHz band is widely used, with antennas like Grid, Yagi, Biquad, Patch, Monopole, and Dipole. Designing efficient antennas is essential for better coverage in compact devices, ensuring cost-effectiveness, lightness, and integration ease. This study focuses on two WI-FI communication antennas for the 2.4GHz band: the Biquad antenna and the B-shaped dual-loop antenna.

## Biquad antenna [1]-[2]

The Biquad antenna, known for its simplicity and effectiveness, features two interconnected square radiating elements, each sized at  $\frac{1}{4}$  mid-band wavelength. This loop antenna design offers excellent directivity and gain for point-to-point communication. It is complemented by a rectangular metallic circular plate acting as a reflector, connected to a 50-ohm feeding coaxial cable.

*Figure 1 - Biquad antenna (a-3D-design (b-top view and (c- Cross section view*

*Table 1 - Dimensions of the studied antenna*

Part	Dimension (mm)
Wire diameter	1.5
Square side length	32
Inner conductor diameter	1.5
Outer Dielectric diameter	5.1
Reflector diameter	140
Reflector thickness	2
Coaxial cable length (Above the reflector)	18
Mid-band wavelength	125

*Table 2 - Material properties*

Material	Relative permittivity	Dielectric loss tangent	Electrical conductivity (S/m)	Thermal conductivity (W/m. K)
Copper	1	0	5.96E+7	401
Aluminum	1	0	3.5E+7	237
Teflon	2.1	0.001	0	0.23

## Electromagnetic boundary conditions

Wave Port: Facilitating accurate analysis, it's applied to the coaxial antenna's dielectric input face.

Radiation: Crucial for antenna analysis, it truncates the computation domain and is applied to surrounding air box faces.

Perfect Electric Conductor (PEC): Ensures proper wave reflection and absorption, applied to coaxial cable and reflector surfaces.

## Mesh

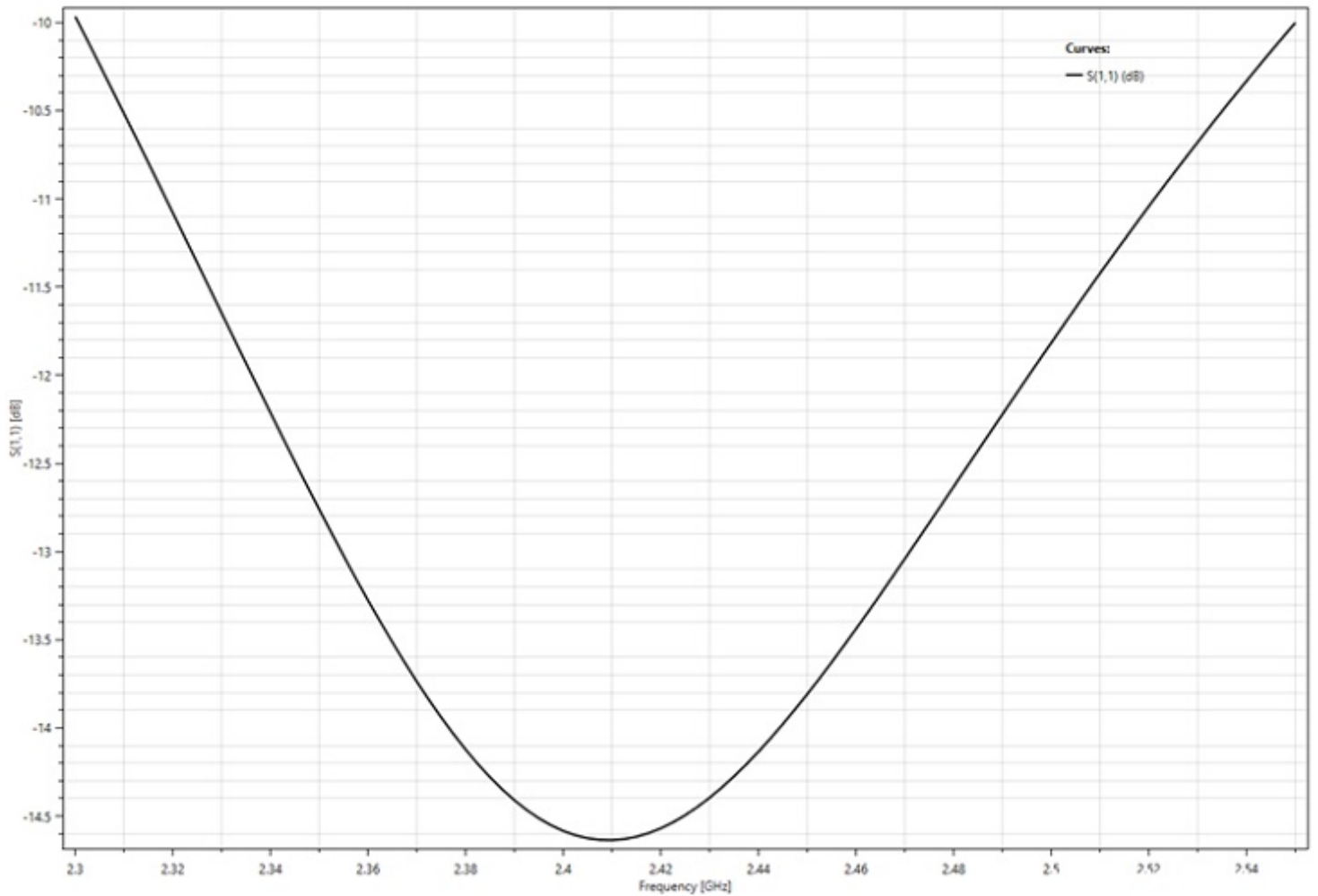
*Figure 2 - Meshed model*

## Results

Utilizing the HFWorks Antenna solver at a 2.4 GHz frequency, coupled with thermal analysis, we examined the Electric and Magnetic field distributions for an excitation power of 1 Watt. The results are as follows:

*Figure 3 - Fringe plot of (a- E-field and (b-Magnetic field distribution*

The depicted figure illustrates the return loss 2D plot outcomes spanning a frequency range from 2.3 GHz to 2.55 GHz. Notably, the center frequency of the filter registers at around 2.41 GHz, showcasing a bandwidth exhibiting a total under 10 dB.

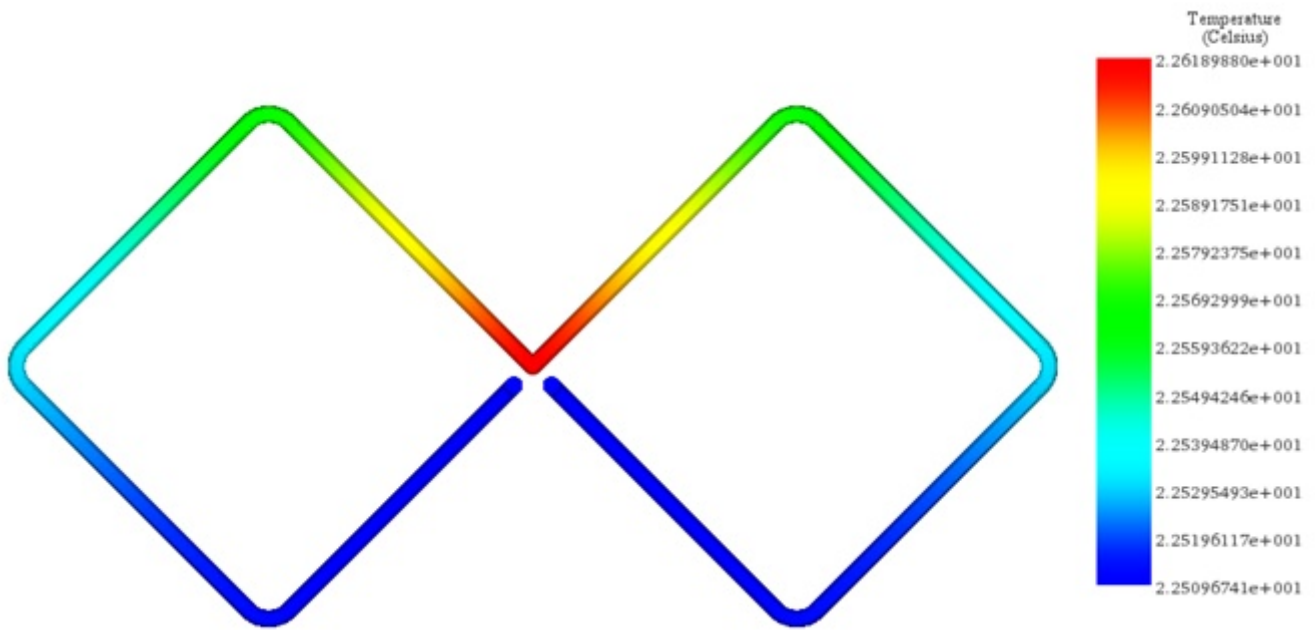


**Figure 4 - Return loss results versus frequency**

The metallic reflector strategically redirects electromagnetic waves towards the antenna's front (-Z-axis), enhancing gain and directivity while minimizing rearward radiation. With a gain of 10.5 dB, the Biquad antenna efficiently concentrates radio frequency energy. Figure 5 illustrates its radiation pattern, emphasizing directional transmission and effective power concentration in the desired direction.

**Figure 5 - (a-3D and (b- 2D Gain pattern results at Phi=0**

To evaluate the thermal behavior of the studied antenna under an applied excitation power of 5-Watt, convection BC is applied to the surrounding air box at an ambient temperature of 22°C and a convection coefficient set to



*Figure 6 - Temperature distribution across the copper part at 2.4GHz.*

### **B-shaped dual loop antenna [3]:**

Loop antennas, whether employed singly or in arrays, are highly versatile and cost-effective solutions for wireless communication needs. They come in various shapes, such as circular, triangular, or elliptical, offering flexibility in design and application.

In our selected loop antenna design, we utilize interconnected loops positioned over a conductive plane, as depicted in Figure 7. Power is supplied via a low-loss 50-ohm coaxial cable.

*Figure 7 - Dual loop antenna (a-3D-design (b- Cross section view*

*Table 3 - Dimensions of the studied antenna*

<b>Part</b>	<b>Dimension (mm)</b>
Wire diameter	1
Loop radius	20
Inner conductor diameter	1
Outer Dielectric diameter	3.35
Substrate dimensions	220 x 100 x 1.6
Mid-band wavelength	125

The antenna utilizes copper wire for its metallic components, while Teflon material is employed in the dielectric coaxial part. Additionally, a glass-fiber FR4 substrate with dual metalized sides is incorporated into the design.

*Table 4 - Material properties*

<b>Material</b>	<b>Relative permittivity</b>	<b>Dielectric loss tangent</b>	<b>Electrical conductivity (S/m)</b>	<b>Thermal conductivity (W/m. K)</b>
FR-4	4.6	0	0	0.36

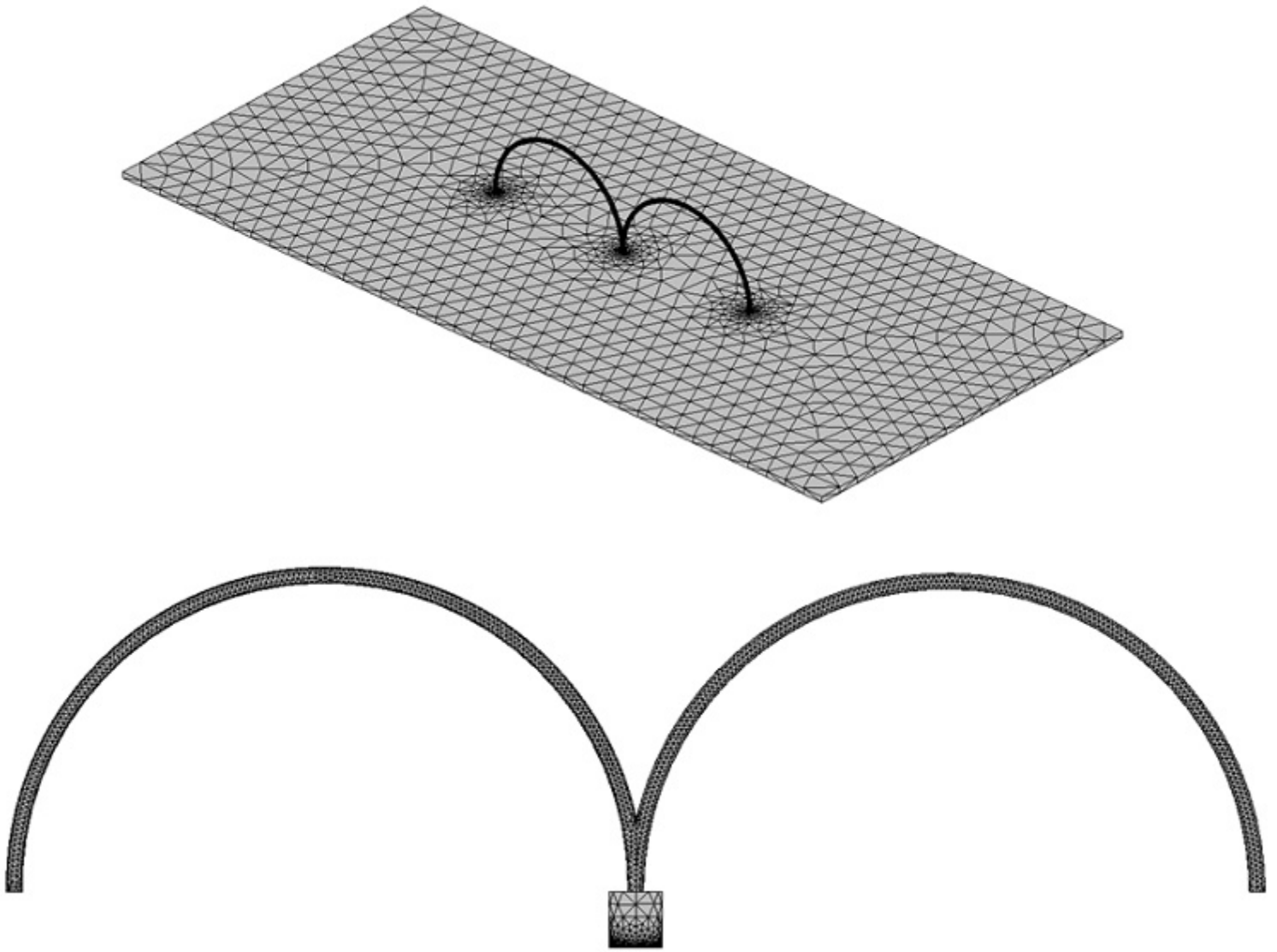
## **Electromagnetic boundary conditions**

Wave Port: Applied to the dielectric input face of the coaxial antenna.

Radiation: Applied to the outer faces of the surrounding air box.

Perfect Electric Conductor (PEC): Applied to the top and bottom faces of the substrate part.

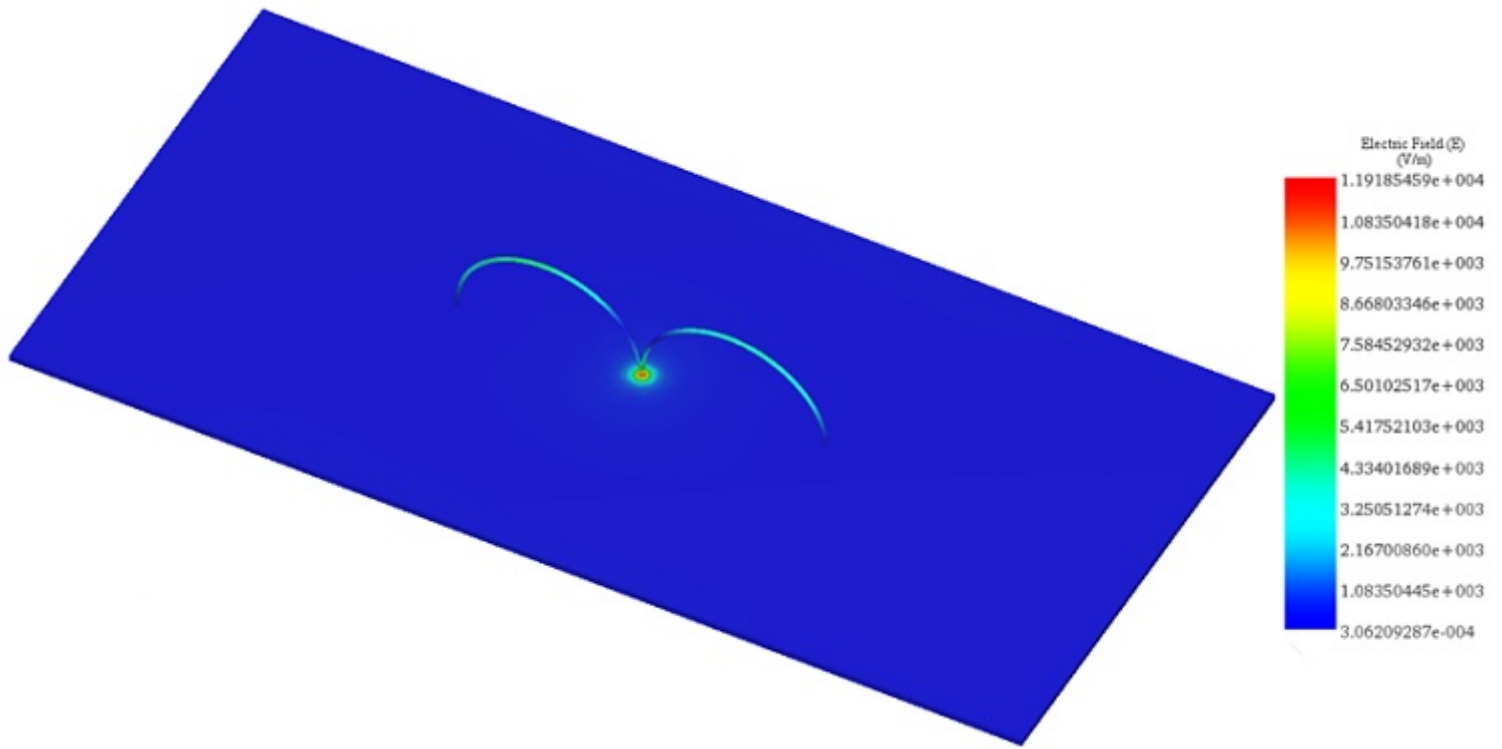
## **Mesh**



*Figure 8 - meshed model*

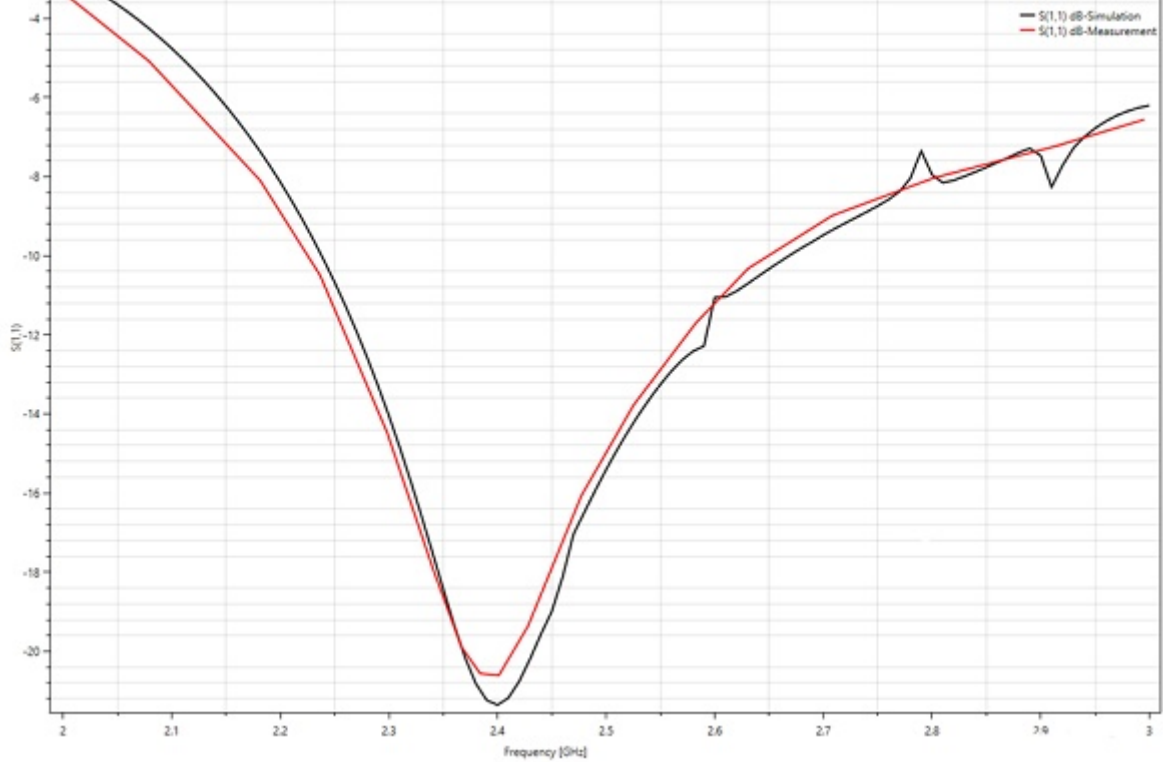
## **Results**

For the frequency range of [2GHz-3GHz], the simulation at 2.4 GHz displays the distribution of the electric field, as depicted in the following figure:



*Figure 9 - Electric field distribution at 2.4GHz*

The subsequent figure depicts a 2D plot showcasing the return loss results plotted against frequency, with the nominal frequency set at 2.4GHz. It demonstrates that the B-shaped loop antenna achieves a bandwidth of 420 MHz for S11 -10 dB.



**Figure 10 - Return loss versus frequency**

A comparison between HFWorks and measured results, as shown in Table 5, validates the strong agreement between simulation and experimental data.

**Table 5 - Comparison between measurement and simulation results**

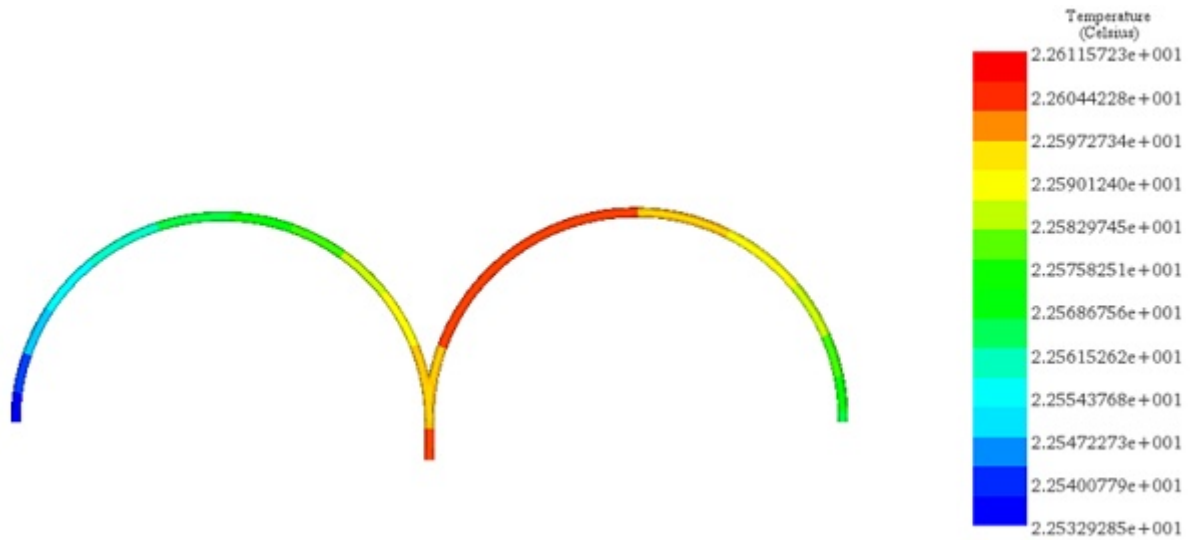
Results	Measurement	HFWorks simulation
Magnitude of S11-2.4GHz	20 dB	21 dB
Gain -2.4GHz	6.31 dB	5.98 dB
	40%	42%

The radiation pattern provides insights into how the antenna radiates electromagnetic energy into space. It's a crucial aspect of antenna performance, showcasing characteristics like gain, directivity, and electric field distribution. Below, you'll find the E-field radiation pattern at 2.4 GHz:

**Figure 11 - E-field radiation pattern: a- and b- at 2.4 GHz**

To assess the thermal performance of the antenna under a 5-Watt excitation power, a convection boundary condition is applied to the surrounding air box. The ambient temperature is set at 22°C, with a convection coefficient specified as:





*Figure 12 - Temperature distribution across the copper part at 2.4GHz.*

## Conclusion

This application note delves into wireless systems, particularly focusing on two antenna designs for the 2.4GHz band: the Biquad antenna and the B-shaped dual-loop antenna, pivotal for enhancing Wi-Fi communication. The Biquad antenna, known for its simplicity, comprises two interconnected square elements, providing excellent directivity and gain, ideal for point-to-point communication. A metallic reflector enhances its performance by focusing electromagnetic waves forward, achieving a notable gain of 10.5 dB. Conversely, the B-shaped dual-loop antenna offers a versatile design with interconnected loops over a conductive plane, demonstrating a bandwidth of 420 MHz for S11 <math>-10\text{ dB}</math>, indicating efficient operation within the 2.4GHz band. Both antennas are analyzed using the HFWorks Antenna solver, examining electric and magnetic field distributions, return loss, gain patterns, and thermal behavior under a 5-watt excitation. The study showcases each antenna's distinct advantages, with the Biquad excelling in directivity and the B-shaped dual-loop showing broader bandwidth and good agreement between simulated and measured results.

## References

- [1]. Singh, Bablu Kumar and Amandeep Singh. "A Novel BiQuad Antenna for 2.4GHz Wireless Link Application : A Proposed Design." (2012).
- [2]. [www.sjsu.edu/people/raymond.kwok/docs/project172/Omni\\_and\\_Biquad\\_antenna\\_2009.pdf](http://www.sjsu.edu/people/raymond.kwok/docs/project172/Omni_and_Biquad_antenna_2009.pdf)
- [3]. Chamorro-Posada, Pedro, et al. "A plug'n'play WiFi surface-mount dual-loop antenna." *HardwareX 1* (2017): 46-53.